

Name:

Class:

Date:

Lesson 10.2: The Dairy Industry

Lesson Review

Carefully study the lesson and then answer the following questions.

1. More than ____ of the dairy cows in the United States are in California. (10.2.0)

- A. 11%
- B. 18%
- C. 25%
- D. 52%

Answer:

2. List the top five states in dairy cattle production. (10.2.0)

Answer:

3. The average dairy cow produces about ____ of milk each day. (10.2.1)

- A. 4.0 gallons
- B. 5.2 gallons
- C. 7.5 gallons
- D. 9.5 gallons

Answer:

4. How much of the beef produced in the United States comes from dairy cattle?
(10.2.1)

- A. 14%
- B. 18%
- C. 22%
- D. 26%

Match the dairy product to its definition.

- A. Butter
 - B. Buttermilk
 - C. Cheese
 - D. Condensed milk
 - E. Cream
 - F. Evaporated milk
 - G. Frozen yogurt
 - H. Ice cream
 - I. Sour cream
 - J. Yogurt
5. Product made by removing about 60% of the water from milk (10.2.1)

Answer:

6. Churned product of milk or cream (10.2.1)

Answer:

7. Cream that has been fermented by bacterial culture (10.2.1)

Answer:

8. Milk and milk solids fermented by two added bacterial cultures (10.2.1)

Answer:

9. Frozen dairy dessert containing active or inactive bacterial cultures (10.2.1)

Answer:

10. Heavily sweetened milk product made by removing about 60% of the water content in milk (10.2.1)

Answer:

11. Fatty liquid rising to the top of milk (10.2.1)

Answer:

12. Sweet, frozen food made from no less than 10% butterfat (10.2.1)

Answer:

13. Slightly sour liquid left over following the process of churning butter (10.2.1) B.

Answer:

14. Solid food made from milk curd (10.2.1)

Answer:

15. *True or False?* Dairy calves spend the first three months with the cow. (10.2.2)

Answer:

16. *True or False?* Dairy heifers are typically bred at about 15 months of age. (10.2.2)

Answer:

17. *True or False?* Only bull calves with superior genetics are kept for bulls in the dairy industry. (10.2.2)

Answer:

18. *True or False?* Most dairy farms keep a bull and use natural breeding methods. (10.2.2)

Answer:

19. *True or False?* A dairy cow will typically only stay in the production cycle for 2 or 3 years. (10.2.2)

Answer:

20. Inflammation of the mammary glands, usually caused by bacteria, is called _____. (10.2.2)

A. mastitis

B. homogenization

- C. culling
- D. mammary

Answer:

21. Lameness is a particular concern in dairy cows because _____. (10.2.2)

- A. they are large and have excess weight
- B. lactation causes stress on bones and tendons
- C. most of them are very old
- D. they walk mainly on concrete to enter the milking parlor

Answer:

22. *True or False?* Most dairy cows are milked three times a day. (10.2.2)

Answer:

23. List the seven steps in the milking process. (10.2.2)

Answer:

24. Milk must be cooled to a temperature below 45°F within _____. (10.2.2)

- A. 30 minutes
- B. 1 hour
- C. 2 hours
- D. 4 hours

Answer:

25. List the four requirements that milk must meet to follow industry standards. (10.2.2)

Answer:

26. Heart girth refers to the size of a cow's _____. (10.2.3)

- A. hooves
- B. chest floor

- C. heart
- D. lungs

Answer:

27. Which of the following is *not* a practice used to maintain herd health? (10.2.4)

- A. Observe new animals for possible signs of diseases and parasites.
- B. Monitor cows during calving.
- C. Administer vaccines when after a cow in the herd becomes sick.
- D. Maintain a good working relationship with a large-animal veterinarian.

Answer:

28. How much roughage does a cow need to eat per a day? (10.2.4)

- A. 30–35 lb
- B. 40–45 lb
- C. 50–55 lb
- D. 60–65 lb

Answer:

29. *True or False?* Cows slipping and falling in the milking parlor should be a concern when handling dairy cows. (10.2.5)

Answer:

30. *True or False?* Dairy bulls are typically very mean and aggressive. (10.2.5)

Match the dairy cow's external anatomy to the correct term. (10.2.3)

31. Milk wells

Answer:

32. Mammary veins

Answer:

33. Fore udder attachment

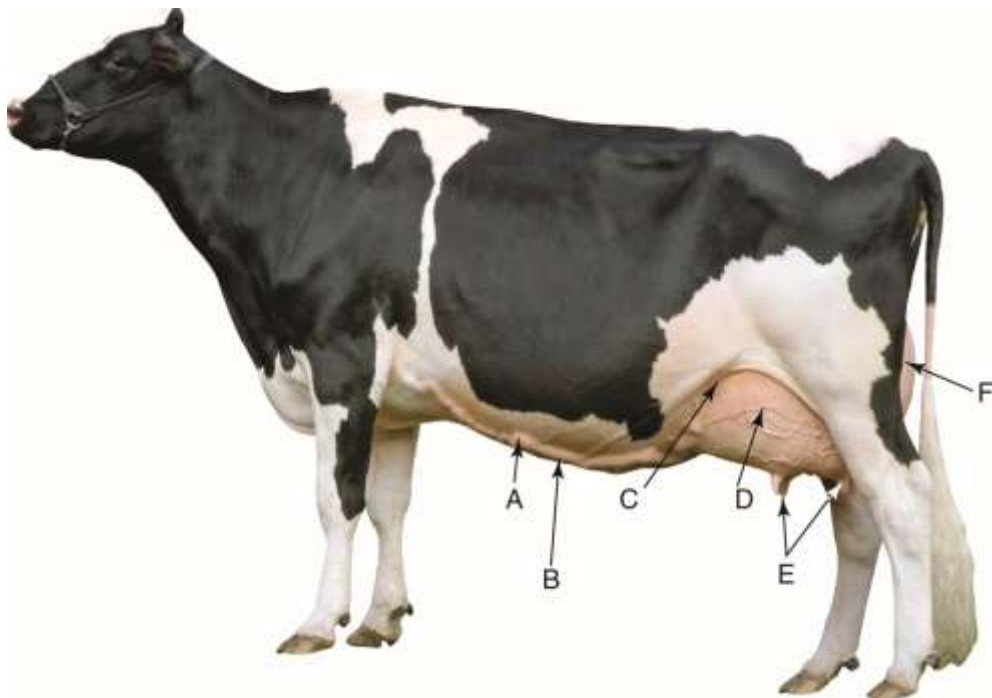
Answer:

34. Fore udder

Answer:

35. Teats

Answer:



Courtesy of Hoard's Dairyman

Critical Thinking

1. What are the major differences between beef cattle structure and dairy cattle structure? (10.2.3)

Answer: